

KARIBAN  
PREMIUM

PK903

## Women Supima® cardigan

- Extra-long fibre Supima® cotton for a silky texture.
- Machine washable for easy care.
- Straight fit for a chic, understated style.

100% cotton Supima®. Combed cotton. Gauge 12. Superior quality fabric. Fully-fashioned: knitted in shape and assembled on a knitting machine. Neckline, wrist cords and hem, 1x1 rib. Buttonhole with plastic buttons. Matching. Average weight size M : 250g.



XS - S - M - L - XL - XXL



210 g/m<sup>2</sup>

**No Label**



### More information

#### Logistic



5



20

#### Country of origin



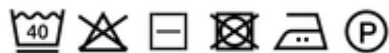
BD - Bangladesh

#### Customs code



61102099

#### Washing instructions



Black



Deep  
Navy



Grey  
Heather

### Also available in version



PK902

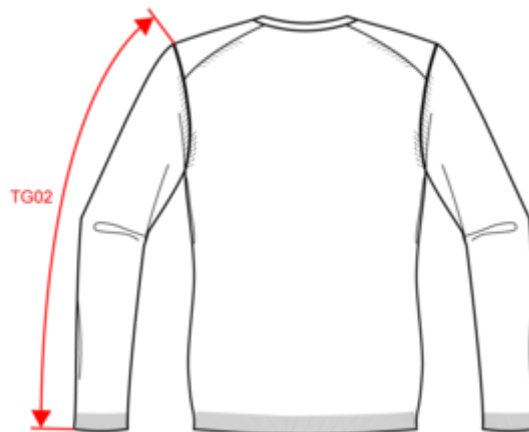
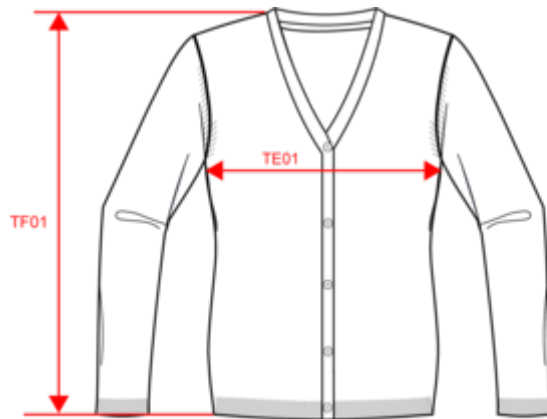


KARIBAN  
PREMIUM

PK903

Women Supima® cardigan

Dimensions (cm)



Measurements in cm	XS	S	M	L	XL	XXL
TE01 - 1/2 chest width at 1.5cm below armhole	42.00	45.00	48.00	51.00	54.00	57.00
TF01 - Total height from HSP	58.50	60.50	62.50	64.50	66.50	68.50
TG02 - Long sleeve length	59.00	60.00	61.00	62.00	63.00	64.00

# KARIBAN PREMIUM

PK903

## Women Supima® cardigan

### Colours information



**Black**  
RVB : 35,35,37  
Pantone C : Black  
Pantone TCX : 19-4004TCX



**Deep Navy**  
RVB : 34,35,47  
Pantone C : 532C  
Pantone TCX : 19-3924TCX



**Grey Heather**  
RVB :  
Pantone C : Based on 417C  
Pantone TCX : Based on 18-5203TCX

Logistic



5



20

Sizes	Width (cm)	Height (cm)	Length (cm)	Net weight (kg)	Gross weight (kg)	Pieces/Box	Pieces/Bundle
XS	40.00	21.00	60.00	4.10000	5.60000	20	5
S	40.00	21.00	60.00	4.60000	6.10000	20	5
M	40.00	21.00	60.00	4.60000	6.10000	20	5
L	40.00	21.00	60.00	5.30000	6.80000	20	5
XL	40.00	21.00	60.00	5.70000	7.20000	20	5
XXL	40.00	21.00	60.00	6.00000	7.50000	20	5